

# The Reminder

*A publication of the Senior Men's Club of Birmingham, Michigan*

## PROGRAMS FOR DECEMBER, 1989 -- PAUL CARTER, CHAIRMAN

- Dec. 1      Speaker: EUGENE ARDEN, Vice-Chancellor, Academic Affairs  
                  Subject: "The University of Michigan-Dearborn, A Satellite Campus in Orbit"
- Dec. 8      Speaker: RICHARD HENNE, Club Member  
                  "Memories of Christmas"
- Dec. 15     Hostesses' Day - Music by the Banjos of Michigan
- Jan. 5      Speaker: JIM FLACK, Club Member  
                  Subject: "Japan's Secret Weapon"

JANUARY PROGRAM CHAIRMAN IS ART BURGOTT

CHAIRMAN FOR JAN. 5 - ROSS WAGNER

HENRY DAWKINS - GENERAL CHAIRMAN, PROGRAMS

### DISCUSSION GROUP SCHEDULE

- Dec. 1      "The Therapeutic Effects of Laughter"  
                  ROY EDWARDS, Leader
- Dec. 8      "Decisions We Make and How They Can Change Our Lives"  
                  BILL AITKEN, Leader
- Dec. 15     Christmas in Europe"  
                  LEE BUSCH, Leader and December Chairman

### DATES TO REMEMBER

- Dec. 7 - BASCC Dinner Dance
- Dec. 13 - Investment Study Group  
                  2:45 pm
- Dec. 20 - Christmas Dinner Party  
                  Page 8
- Jan. 4 - Golf Dome Starts  
                  Page 4
- Jan. 5 - Club Meets at Church  
                  Page 8

PAUL FITZPATRICK is General Chairman,  
 Discussion Group.

NEXT REMINDER DEADLINE IS  
 FRIDAY, DEC. 15

# EDITOR'S NOTEBOOK

Former President DICK JEFFRIES was in California during the recent big earthquake. He was traveling by car near Monterey and felt the quake, but had no trouble driving. The big headache was traffic confusion resulting from electric power outage.

\* \* \*

Congratulations and best wishes to member GENE HESS and his bride, the former Byra Stinson, who has helped in past years as one of the hostesses who have served us so ably. Mrs. Hess's first husband was the late LESTER (BUD) STINSON, who joined the club in 1978.

\* \* \*

This is our last issue of The Reminder. In a few weeks we will be heading for Florida. CLEM CYKOWSKI has been appointed editor starting with the January issue. We would like to thank all those who have been very helpful following the untimely death of AL BEAUVAIS.

\* \* \*

Every issue we carry "Dates to Remember". Here's another date to remember: Jan. 11, 1957. On that day a small group of men met at The Community House to organize a senior men's club.

\* \* \*

Sometimes I cannot read my own writing. When I received the names of nominees for club officers, I scribbled down the first and last names of RICHARD BEAUBIEN, our new treasurer. But my scribble was poor, and I typed the first name as "Robert", as shown in the November issue. In a little story about a talk given by MARDY POLANER, I wrote that he appeared before the U. S. Merchant Marine Academy. More properly, it was the Maritime Institute of the State University of New York. Well, I have never claimed to be infallible.

\* \* \*

One of the most influential speakers ever to appear before the club was Dick Headlee, considered somewhat of an expert on public taxation policy and a very interesting public speaker. Anyhow, Headlee advised us to vote against both tax proposals in the election Nov. 7. The "no" vote in Birmingham was overwhelming and no doubt Headlee had some influence in that.

\* \* \*

A big crowd - in fact, a record crowd - turned out Nov. 3 to hear Dr. Philip Let, one of the leading lights in the U. S. program for military tanks. President BERT HENDERSON announced from the lectern that 284 men were present, a new record. Factors in the big turnout may have included a large number of applicants, plus the fact that vacationing

(CONT'D PAGE 5)



*The* **Reminder**

## EDITOR

JOHN H. HARWOOD

## ASSOCIATE EDITOR

*Production & Graphics*

CLEM CYKOWSKI

## EDITOR EMERITUS

ALBERT RIEBLING

## CIRCULATION

JOE KERN, Mgr.

GERALD BARTLAM

DANIEL HARRINGTON

JOHN W. WEARNE

## STAFF WRITER

BILL STRAND

Published by the Senior Men's Club at The Community House, 380 S. Bates, Birmingham, MI 48009. Issued monthly except August. Distributed at first meeting of month. At later meetings, available in the Ruth Shain Room. Mailed to Associate members by the Corresponding Secretary.



# Club's Long Waiting List Is Given Study

## THERE'S NO EASY SOLUTION FOR CUTTING THE WAIT TIME

As all club members know, there is a long waiting list of applicants for membership, resulting in lengthy delay for admission. This is a matter of considerable concern to the club leadership, so a policy-study program was recently authorized. There are many alternatives and ideas, but no easy solution, a fact demonstrated at a meeting Sept. 29 of the Discussion Group, attended by 30 members and 4 applicants.

A poll showed 6% in favor of no action, 62% favoring some form of space increase and 44% favoring a decrease in geographical boundaries.

## SEVEN APPROACHES LISTED

The discussion covered seven approaches to the wait problem: (1.) Do nothing; (2.) raise age limit; (3.) decrease boundaries; (4.) larger meeting space; (5.) start another club; (6.) limit attendance for all members; (7.) reduce applicants by limiting sponsorship.

Our area is about twice that of the Birmingham school district and goes much farther north. An appropriate size reduction would be in the northwest corner of Bloomfield Township. This could be done by attrition by eliminating new applications from this area.

The Community House remodeling will result in little if any increased space in the main room, but there may be the possibility of televising the meeting to

one or more other rooms. Other approaches to the space problem could be separate meetings, meeting theatre style with lunch elsewhere, limiting luncheons or going elsewhere.

While a 1983 poll showed 55% of applicants favoring a satellite club, this has found little favor elsewhere. However, a new senior men's club has started in West Bloomfield under Parks & Recreation sponsorship.

Limiting attendance for all members has no support.

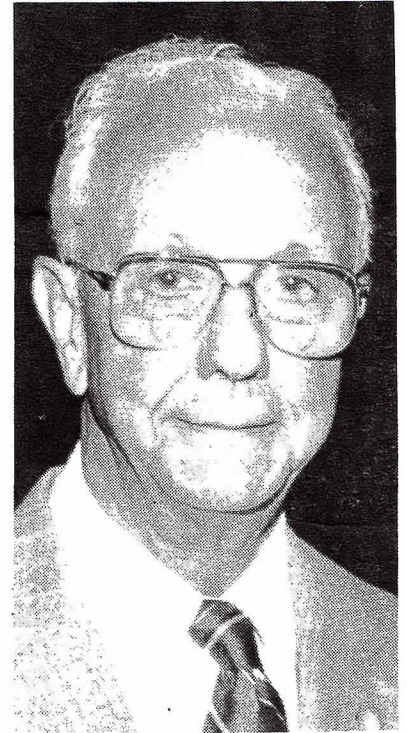
## LIMIT SPONSORSHIP?

Membership could be controlled by limiting sponsorship. As an example, each member could sponsor one applicant every 2 years, and 5 sponsors would be required for each applicant.

The problem is not new; in fact, there are several clubs in this area where action has been taken or contemplated to reduce waiting time for admission.

The Birmingham Senior Men's Club policy committee will continue to study the problem. The committee is comprised of the last five presidents of the club and the present president.

--CHUCK WILLIAMS



**PRESIDENT BERT HENDERSON AND HIS FAREWELL MESSAGE**

"It has been both a privilege and pleasure to serve as President of the Senior Men's Club of Birmingham. However, it takes the remaining nine officers and the 24 committees consisting of a total of 218 members to keep the club running smoothly and making it the outstanding success it has become. I wish to express my sincere appreciation and thanks to each of them for the outstanding job they have done. It certainly has made my job simple and enjoyable. Thanks again for your great help during the year!"





# GAMES

MARCEL DE SMET  
GENERAL CHAIRMAN

## BRIDGE

**HENRY DAWKINS, CHAIRMAN**  
**EDWIN CLARKE, DUPLICATE**  
**CHAIRMAN**

This report covers 2  
Friday meetings: Oct. 27  
and Nov. 3. There were 148  
bridge players (60 Contract  
and 88 Duplicate).

## CONTRACT BRIDGE

### 13 HIGHEST SCORES

Lloyd Sturgeon	4670
Bert Henderson	4390
Marsden Hubbard	4150
Nic Greenbaun	4090
Roy Hawkinson	4090
Bob Lotz	4020
Larry Keim	3800
Herb Lugers	3680
Dick Beaubien	3140
Roy Hawkinson	3050
Neal VanHalteren	3050
Don Wagner	3030
Howard Hoffman	3020

### 13 HIGHEST AVERAGES

Roy Hawkinson	3570
Marsden Hubbard	3540
Lloyd Sturgeon	3280
Herb Lugers	3160
Nic Greenbaun	3140
Howard Hoffman	2770
Julius Falke	2720
Don Wagner	2625
Hockey Melikian	2620
Baylor Sutton	2485
Bill Hanlon	2440
Phil Werner	2415
Dick Beaubien	2360

Small Slams: 6D Herb Lugers  
& Lloyd Sturgeon; 6D Larry  
Keim & Bob Lotz

## DUPLICATE BRIDGE

### FIRST PLACE SCORES:

Bert Swanson	66.3%
Bob Smith	62.0%

### SECOND PLACE WINNERS:

Ed Clarke and Joe Rattner

### THIRD PLACE WINNERS:

Len Dilella and Sturgis  
Gregory

### FOURTH PLACE WINNERS:

Jim Peters and Harold Merkel

Small Slams: 6N Lee Busch &  
Bob Bentz; 6N Joe Rattner &  
Jerry Bartlam; 6D Joe  
Rattner & Art Conat

## **APPLICANTS GOLF LEAGUE** **TAKING RESERVATIONS NOW**

It's not too early to  
sign up for the 1990  
Applicants Golf League. You  
can add your name to the  
roster on the bulletin  
board.

All you golfers who run  
to the sun, sign up before  
you leave your summer home.

We will again play at  
White Lake Oaks located at  
M-59 and Williams Lake Road.  
The cost this year is \$85  
and can be paid any time  
between now and March 9,  
1990. Checks should be made  
out to Senior Men's Club of  
Birmingham and given to  
Marcel DeSmet or Joe Steele.  
Your money will be refunded  
if circumstances dictate  
that you cannot play. Think  
Spring! Think Golf!

--JOE STEELE

## **HERE'S THE 1990 SCHEDULE FOR** **GOLF UNDER THE DOME**

Outdoors it may be snowy  
and cold, but under the  
dome, Senior Men's golfers  
will be able to practice and  
get a bit of help from the  
pro.

The first session at the  
Golf dome will be Thursday,  
Jan. 4, 1990 at 9 a.m.,  
lasting until 11 a.m. It's  
\$7 for each day you attend.  
The pro will be there to  
teach and help every member.

The dome is at 29601 John  
R, just north of 12 Mile  
Road, Madison Heights. The  
schedule:

Jan. 18 (2nd meeting)

Practice only

Feb. 1 Pro in attendance

Feb. 15 Practice only

Mar. 1 Pro on hand

Mar. 15 Practice only

Mar. 29 Practice only

--MARCEL DeSMET, CHAIRMAN

## **TEAM #2 IS NOW LEADING** **SENIOR MEN'S BOWLING LEAGUE**

There is no change in  
the substitute status, subs  
are still in great demand  
to fill teams that have  
bowlers absent. So you  
potential sub bowlers, dig  
that ball out of the closet  
and come to Plum Hollow  
Bowling Alley at Lahser and  
9 Mile Roads, at 9:30 a.m.  
on Mondays.

As of November 6, the  
lead in first is Team #2,  
consisting of Jerry Fitz-  
simons, Ed Barrett, Harry  
Deem, Ray Swartz. The  
individual high game still  
belongs to Jack Corey with  
244. The individual high  
series was taken over by  
Les Swanson with a 596. The  
team high single game  
belongs to team #12 with a  
738 game; its members,  
J. A. Falke, Bob Hadley,  
Virgil Smith & Bill Quinlan  
The team high series of 204  
is by team #7 consisting of  
Frank Garland, Lloyd  
Sturgeon, Ray Latovick &  
Don Upward.

The high average bowlers  
are: Ray Swartz 171, Art  
Byington 171, Jack Trudell  
172 and Bert Henderson 174.

See you at the bowling  
Alley! --FRAN DeGRANDE



# Investment Group Selects Its Favorites

## CONTEST OFF TO ROCKY START AS STOCK MARKET TURNS WEAK

The \$100,000 fantasy contest of the Investment Study Group got off to a rocky start because the market took a bad tumble only one week after the contest started.

Contest leaders as of November 3 were (1) Henry Merker, portfolio value \$105,869; best stock, Mylan Labs. (2) Blaine Gordon, \$100,000 (he stayed in cash). (3) Jim Fonda, \$98,969, Battle Mountain Gold. (4) Tom Mitzelfeld, \$98,350, best stock, Georgia Gulf. (5) Bill Eyth, \$98,163, Pfizer his best stock.

**NEXT MEETING** will feature Don Richardson, V.P. and Manager of the Dearborn office, Roney & Co., as the speaker December 13. Don has provided an interesting meeting in each of the past five years. His topic will be "What's in Store for the Nineties". Don't miss this meeting.

Murray Hayward has compiled this "contest trivia": There were 46 entrants whose job was to take a mythical \$100,000 and invest it. They named 151 different stocks, but six entrants kept more than 10% of their investment in cash, namely, Blaine Gordon, 100%; Harold Nyberg, 14.3%; Gene Sparrow, 12.7% Roger Struck, 11%.

There were 32 stocks selected by more than one contestant. Seven picked Dow Chemical and I.B.M. Five named Compaq Computer and Masco Corp. Four liked Waste Management. Three named Archer-Daniels-

Midland, Boeing Co., Walt Disney, Gerber Products, Merck & Co., and Upjohn. Two picked all these: Bristol Myers, CMS Energy, Columbia Gas, Delta Air, H. J. Heinz, Home Depot, Johnson & Johnson, Marriott Corp., Mobil, National Education, Perry Drug, Procter & Gamble, Sara Lee, Standard Federal Bank, Unisys, Wal-Mart and Williams Companies.

Though in Florida, Murray Hayward has a computer with him and no doubt will come forth with more reports on the rivalry of the contest. Because of the weak market in mid-October, only 17 stocks showed any gain, this ranging from 20 cents to \$17.39.

**EDITOR'S NOTEBOOK (CON'T.)** of one kind and another was at a minimum. Our program chairmen have run into what they would consider "bad luck".

That is, a couple of people were unable to fulfill their commitment to appear, so they had to work fast for replacement and shuffle programs a bit.

\* \* \*

On that subject - programming - it is probable that many members can suggest one or more people as being good prospects as speakers. Maybe they ought to send a note to that effect to the new general program chairman and Discussion Group chairman when their identity is known.

\* \* \*

Every time we see member LOUIS M. RANDALL, JR., we think of his father, who was business administrator for

the public schools some 50 years ago. Compared to today's staff, the schools then operated with a bare-bones skeleton staff of people. Two school board members we recall very well were Ernest Seaholm and Wylie Groves, who were late immortalized by having high schools named after them.

\* \* \*

ED CLARKE has one of those "stair-chair" ride-up devices sometimes provided for people whose infirmity prevents them from climbing a flight of stairs. Very generously, Ed has offered to loan this device to any member who may have need of it. Phone Ed at 646-8794 if you are interested. In addition, John Harwood has a like-new vacuum machine sometimes used by a patient who may have trouble swallowing saliva. Phone if you would like to borrow it.

\* \* \*

## 1990 MEMBERSHIP DUES

You are reminded that membership dues for 1990 are now being collected with collections running somewhat behind schedule relative to recent prior years. While the deadline for payment is Feb. 28, 1990, prompt payment is encouraged. A table is set up in the Ruth Shain Room for each Friday meeting, normally manned by Walt Meyers, to facilitate collection. Both checks and cash are accepted.



# Senior Men's Club Facts and Figures

## 1989 ATTENDANCE SCHEDULE FOR APPLICANTS

A THRU F	G THRU L	M THRU R	S THRU Z
Jan. 5	Jan. 12	Jan. 19	Jan. 26
Feb. 2	Feb. 9	Feb. 16	Feb. 23
Mar. 2	Mar. 9	Mar. 16	Mar. 23
Apr. 6	Apr. 13	Apr. 20	Apr. 27
May 4	May 11	May 18	June 1
June 8	June 15	June 22	June 29
July 6	July 13	July 20	July 27
Sept. 7	Sept. 14	Sept. 21	Sept. 28
Oct. 5	Oct. 12	Oct. 19	Oct. 19
		or Oct. 26	or Oct. 26
Nov. 2	Nov. 9	Nov. 16	Nov. 30

Applicants are not eligible to attend meetings in December.

## MEMBERSHIP INFORMATION

### Special Birthday Greetings (90 and over):

LEE DURHAM, Life Member, will be 91 years old on Dec. 27

Associate Member Birthdays: Dec. 4 - TOM MITCHELL

Dec. 10 - RON BLANCHARD

Dec. 16 - BILL PILDITCH

Dec. 23 - NORM WHITE

Dec. 24 - BURKE BARTLETT

Death: LELAND N. WORTHLEY, who joined in Jan., 1973

MERRITT W. OLSEN, who joined in Mar., 1977

Change of Address:	DeGRANDE, FRANCIS	2/89	489-1064
	38212 French Pond	FH	48313

New Members:	VAN HALTEREN, CORNELIUS J.	10/89	626-2216	Sponsor: Lloyd Sturgeon
	5660 Crabtree Road	B	48010	

	MacDONALD, JOHN A.	11/89	644-1985	Sponsor: Don Jensen
	1265 Maryland	B	48009	

Life Member Robert T. Gray is now living at a retirement residence to be near his daughter. His address is Tall Oaks Fellowship House #428, 12052 North Shore Drive, Reston, VA 22090. He welcomes cards or letters.

Facts compiled by Walt Meyers

## LARGE GROUP OF MOURNERS ATTENDS FUNERAL OF MERRITT W. OLSEN

Merritt W. Olsen, a prominent citizen of Birmingham and a member of the Senior Men's Club since 1977, died October 27 of heart failure. A large group of mourners attended funeral services at the First Baptist Church where he was a member, including singing in the choir for 60 years.

Merritt was well-versed in Birmingham history and was active in many affairs including the volunteer fire department and civic boards. He was one of the founding members of BASCC. The Eccentric printed a detailed obituary, complete with pictures, including one of the old fire engine which he loved to operate in parades and for children's parties. One photo showed Merritt playing his fiddle in the food market which his family had operated for many years.

Surviving are his wife, Marjorie Canever Olsen; two daughters, Nancy Cook and M. Carol Yeomans; a son, William; two sisters and eight grandchildren.

# 'In Case of Fire' Procedures Are Revealed

## EVACUATION PLANS DRAWN FOR OUR MAIN MEETINGS

It is very unlikely that we will ever have to evacuate our big meeting room, but in case that should be necessary, here are details of our plan. Marcel DeSmet and his sergeant-at-arms people play a leading roll in the program.

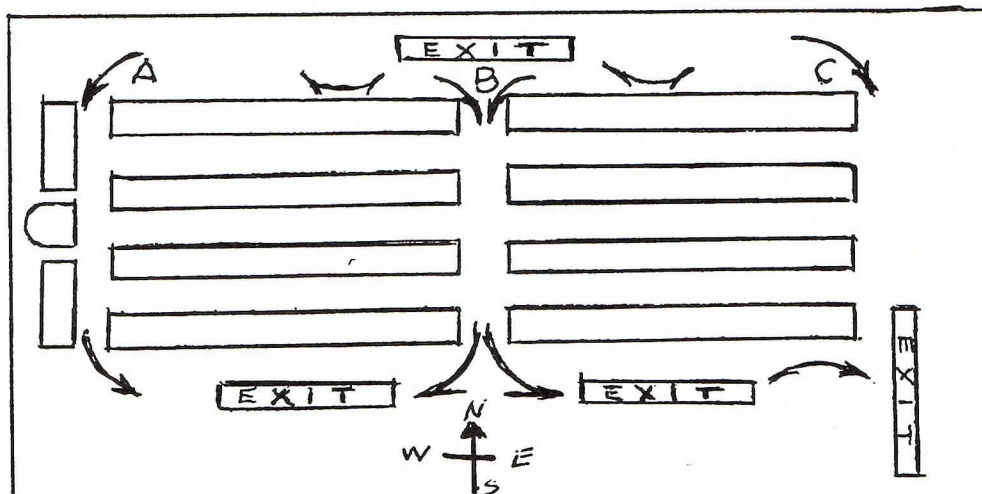
At a recent Executive Board meeting, Bob Hadley voiced concern that we had no special plans for evacuation in case of fire. See the floor plan for our tables, along with other details, in an adjoining space on this page.

The Community House has a fire procedure plan in which specific personnel are assigned to evacuate specific areas; then all people are to convene or congregate in Shain Park. We will coordinate our plan with theirs; after we leave the building we will assemble at one spot and check names with the registration sheet of the day. It will require everyone's cooperation in filing out in an orderly fashion.

## FIRE PROCEDURES AND ASSIGNMENTS

Dining tables will be arranged with an aisle through the middle of each table (rather than being continuous for the entire length of the room). The spaces will be aligned so that there is easy access to the exit doors.

Sergeant-at-Arms personnel will be assigned to Stations A, B and C. In



case of a fire alarm, they will take their stations and direct members to the exits. Prior to every meeting, Sergeant-at-Arms personnel will make sure that all exit doors can be unlocked and opened easily.

It is suggested that members with ambulatory problems select seating near an exit.

SMC procedures will be coordinated with The Community House staff personnel who are assigned to our area of concern.

--Henry Dawkins

## SPEAKER TELLS CLUB MEMBERS THAT THINKING IS A SKILL

A General Motors manager, Robert Everett, told Discussion Group participants Oct. 27 that thinking is a skill that can be taught and learned. Richard Sneed introduced Everett to an audience of 48 club members.

Everett's well-organized slide presentation did not cover his vocation but rather his avocation with definite emphasis on thinking as a skill. To teach "thinking" is not a

fad and is already being taught successfully in the Berkley and Waterford Elementary Schools, he said

Everett hopes for the day when thinking is taught in all elementary schools, high schools, colleges, universities and the market place in order that we regain leadership in the world market.

The speaker is associate director of automotive emissions control for General Motors.

--BILL STRAND

\* \* \* \*

You don't stop laughing because you grow old. You grow old because you stop laughing.

\* \* \* \*

A minute usually contain 60 seconds unless it is preceded by "Just a".

\* \* \* \*



# Club Activities to Move to Local Church

## DETAILS GIVEN ON CHANGES STARTING IN JANUARY 1990

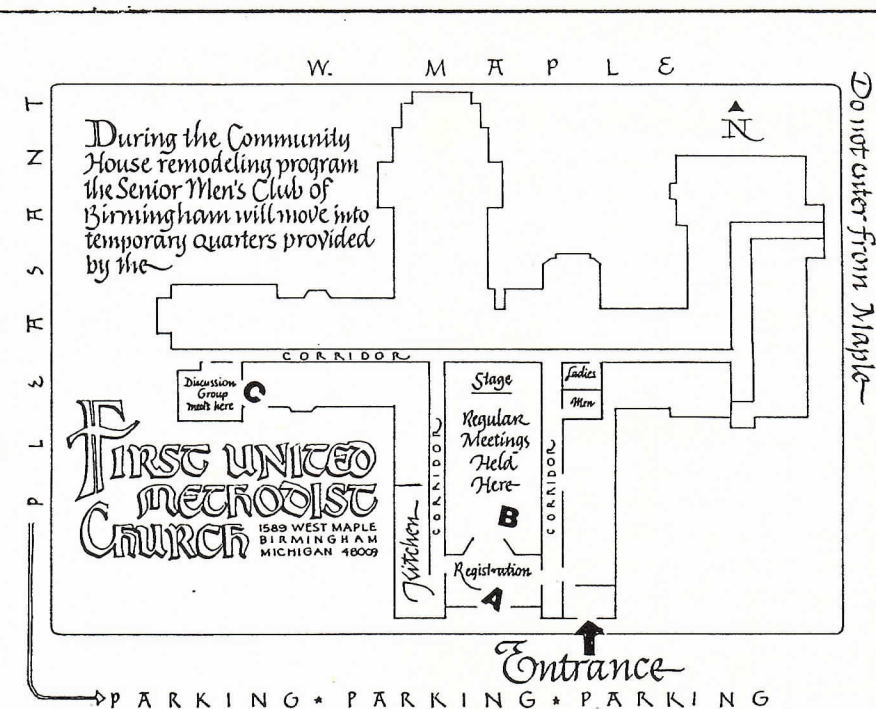
Because of The Community House renovation, many club activities will move to the First United Methodist Church of Birmingham during January, February and possibly March, President Bert Henderson is announcing in a letter to all members, applicants, hostesses and guests. This will include the regular Friday meetings, the Friday bridge games and the Friday Discussion Group. Tuesday bridge and the monthly Tuesday meeting of the Executive Board will continue in The Community House; also, mail relating to Club business should continue to be sent there.

The church is situated at the corner of West Maple and Pleasant Street, a short distance east of the Maple-Chesterfield traffic light. Though the church faces Maple on the north, entrance to the building is best done only from the big parking lot on the south side of the building. The parking lot may be entered from Pleasant Street which begins at Maple and ends at West Lincoln.

To enter the church, walk to a portico entrance at the south end of the building.

In the corridor are facilities for hanging coats, while to the left on entry is "Fellowship Parlor" where registration will take place. Adjoining is the Fellowship Hall" where the main meeting will take place. Restrooms are situated in the corridors on both sides of the hall.

After the luncheon, bridge players will meet in the hall and also in the



Room A above - Registration. Room B - Main Meeting. Room C - Discussion Group. NOTE: Members living on south side of Birmingham will probably want to enter Pleasant Street and parking lot by using West Lincoln. (Drawing by Clem Cykowski)

adjacent parlor. However, the Discussion Group will meet in another parlor (the "Martin Room") situated in the west wing close to Pleasant Street. Signs will be placed in several places. Sergeants-at-Arms will be versed in the details.

"We know you will find your temporary home comfortable and convenient....the parking lot is free," President Henderson wrote.

## DRESS SUGGESTIONS GIVEN FOR THE CHRISTMAS PARTY

The Christmas dinner party Dec. 20 is a dress-up event where everyone looks and feels his or her best.

Ladies are encouraged to wear party dresses, but long dresses are optional.

Gentlemen usually enhance the festive mood of the evening with suits or Blazers, plus a possible colorful vest. Tuxes and tails are out since most of us cannot get into the ones we once wore with much dignity.

Parking meter locations are afree after 6 p.m. on Wednesdays (including December), so we have cancelled the regular valet service.

Serving on the Christmas party committee are: Dick Mary Henne, John & Pat Wenstrand, Bob & Betty Hagemeyer and Art & Helen Burgott.

Tickets are still available at the table in the Ruth Shain Room.

--ART BURGOTT  
PAGE 8